

---

# Operation Manual

## Mini-Flo<sup>®</sup>



**KINO FLO<sup>®</sup>**  
Lighting Systems

# Mini-Flo Kits



Mini-Flo Kit

## **KIT-139X/12**

Mini-Flo Kit 12" Universal

## **KIT-139X/09**

Mini-Flo Kit 9" Universal

### **Kits Contents**

- 2 Mini-Flo Ballast, 12VDC
- 2 2.4 Amp Universal Power Supply
- 2 12" or 9" Fixture
- 2 Extension, 12ft
- 2 Mount
- 1 Flex arm, 6ft
- 1 Alligator Clip Adapter XLR
- 1 Car Adapter XLR
- 1 Travel Case

### **Dimensions**

21.5 x 8 x 17"  
(54.5 x 20.5 x 43cm)

### **Weight**

15 lbs  
6.8kg

# True Match® Lamps



**092-K32** 9" Kino KF32

**092-K55** 9" Kino KF55

**122-K32** 12" Kino KF32

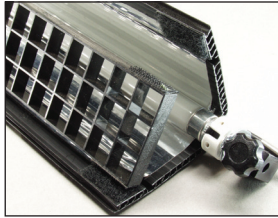
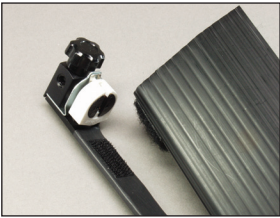
**122-K55** 12" Kino KF55

# Fixture Assembly



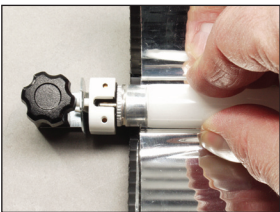
Fixture is comprised of 3 parts:

- Lamp Harness
- Fixture Shell
- Black Louver



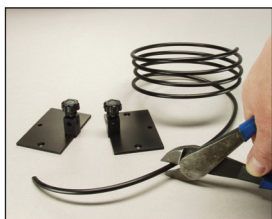
The Lamp Harness, Fixture Shell and Louver are held together with Velcro fasteners.

# Inserting Lamps



Insert the pins at both ends of the lamp into the lamp holder. Rotate the lamp a  $\frac{1}{4}$  turn until the lamp clicks into place.

## Mounting the Fixture



- 1) Cut the Flex Arm wire to desired length.
- 2) Lock knobs on the Mount Plate and Lamp Harness hold the Flex Arm wire in place.
- 3) Use screws or adhesive tape to rig the Mount Plate. Use two plates for greater stability.

## Ballast Operation

### **Warning! To Ensure Proper Operation**

ALWAYS TURN **OFF** THE BALLAST BEFORE connecting or disconnecting lamps, harnesses or Head Extension Cables. Maximum distance is 48ft (4 x 12ft cables).

### **Ballast Operation**

The Mini-Flo Ballast operates remote from the fixture. Connect the Mini-Flo lamp harness to the extension cable or the Ballast. After the lamp is properly installed, the Ballast can be turned on. Avoid operating in temperatures above 125°F (51°C).

(Note: The dimmer should be full up when striking the lamp. Once the lamp has come up to full temperature, in 3-5 minutes, then dim to the desired light level.)

In cold temperatures the Ballast may take longer to ignite the lamp. If it does not ignite within 5 seconds, switch the ballast to OFF and try again. If lamp does not strike after 2 or 3 attempts, turn Ballast off, check that the harness, lamp or any extension connections are secure and restrike.



The **BAL-139X** power connection is a 4-Pin XLR connector.

Note: Use external power supply (**PWS-1524X**) to operate on 100-250VAC.



- 1) Turn dimmer up to full.
- 2) Insert the lamp harness connector into the receptacle on the ballast.
- 3) Turn on the power switch.
- 4) The dimmer knob will adjust the light level.

## Kit Components & Lamps



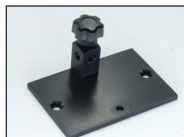
- CFX-091** 9" Mini-Flo Fixture  
**CFX-1201** 12" Mini-Flo Fixture



- X02-12S** Mini-Flo Extension, 12ft



- BAL-139X** Mini-Flo Ballast (4-Pin XLR),  
12VDC



- MTP-MM** Mini-Flo Flex Arm Mount



- MTP-MW6** Mini-Flo Flex Arm Coil, 6ft



**PWC-AX** Alligator to 4-Pin XLR, 12ft



**PWC-CX** Cigarette to 4-Pin XLR, 6ft



**PWC-X42** 4-Pin XLR Splitter



**PWS-1524X** Power Supply 2.4A,  
100-250VAC/12VDC, 4-Pin XLR



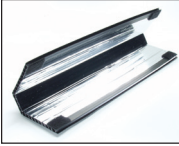
**KAS-MF** Mini-Flo Kit Travel Case

## True Match® Lamps



**092-K32** 9" Kino KF32  
**092-K55** 9" Kino KF55  
**122-K32** 12" Kino KF32  
**122-K55** 12" Kino KF55

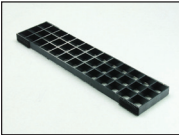
# Fixture Components



**FIX-091** 9" Mini-Flo Fixture Shell  
**FIX-1201** 12" Mini-Flo Fixture Shell

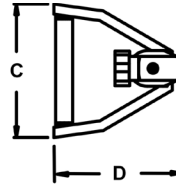
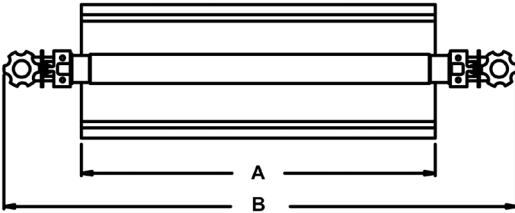


**HAR-091** 9" Mini-Flo Harness  
**HAR-1201** 12" Mini-Flo Harness



**LVR-091-B** 9" Mini-Flo Louver (Black)  
**LVR-1201-B** 12" Mini-Flo Louver (Black)

# Fixture Specifications



Model	A	B	C	D	Weight w/ Lamp
CFX-091	7.75" (19.7cm)	11" (28cm)	2.5" (6.4cm)	3" (7.6cm)	0.4 lbs/ 0.2kg
CFX-1201	11.75" (29.9cm)	14" (35.5cm)	2.5" (6.4cm)	3" (7.6cm)	0.5 lbs/ 0.2kg

# Ballast Specifications



## **BAL-139X** Mini-Flo Ballast, 12VDC

<b>Input Voltage:</b>	230VDC
<b>Output Frequency:</b>	25kHz
<b>Amperage:</b>	0.8A / 9" 0.9A / 12"
<b>Power Connector:</b>	4-Pin XLR
<b>Lamps:</b>	1 F6T5 or 1 F8T5
<b>Weight:</b>	0.8lb (0.4kg)
<b>Dimensions:</b>	4.5 x 3.5 x 2" (11.5 x 9 x 5cm)

For latest Warranty information and Certifications,  
see Kino Flo website at [www.kinoflo.com](http://www.kinoflo.com).

## **Environmental: Disposal of Old Electrical & Electronic Equipment.**



This symbol on the product or on its packaging indicates that this product shall not be treated as household waste. This product is made of recyclable materials and should be disposed of in accordance with local and state regulations.

Kino Flo, Inc. 2840 N. Hollywood Way, Burbank, CA 91505, USA  
Tel: 818 767-6528 website: [www.kinoflo.com](http://www.kinoflo.com)